

IN THIS ISSUE

- ▶ *Bagel Friday Parable Contest*
- ▶ *All American Assisted Living Facility*
- ▶ *Hampton Inn Islandia*
- ▶ *Rockland Shared Use Path*
- ▶ *Other Company News*

Bagel Friday Parable Contest

▶ At the Hayduk Engineering office, every Friday morning from 8:30-9:00 am is “Bagel Friday” where we have an informal group meeting and we socialize to start the day. During the COVID 19 work from home period, we still had a “Bagel Friday” of sorts. We held a “guess the baby picture” quiz, took turns telling stories, and gave educational lectures about the history of Long Island via e-mails every Friday morning. Towards the end of the work from home period we held a parable contest. Several contestants competed in a writing contest to craft the best parable and votes were cast for the top three (3) parables. First place won \$1,000, Second Place won \$500, and Third Place won \$250. Congratulations to Herging Victor, our 1st place winner! ■



All American Assisted Living Facility

▶ All American Assisted Living is a new one-hundred twelve (112) bed assisted living facility with a memory care wing located on Middle Country Road (NYS Route 25) in Coram, NY. Our client, Kaplan Development Group is a developer, owner, and manager of assisted living, independent living, and memory care communities throughout the eastern seaboard. They own and operate over eighteen (18) facilities.

Hayduk Engineering was originally retained by the prior owner of the property, for whom a conceptual site plan for a 75,000 square foot three-story mixed-use building was developed. Hayduk Engineering was also the engineer of record responsible for the design and construction administration of the sanitary pumping station and one (1) mile long force main for the neighboring Wincoram Commons workforce housing development at the site of the former United Artist movie theatre in Coram. The replacement of the downstream Pumping Station #3 in Suffolk County Sewer District #11 – Selden was also part of the Wincoram

Commons project. Due to our involvement in both projects, Hayduk Engineering was able to assist in networking a deal between Conifer Realty (the developer for Wincoram Commons) and the prior owner of the All American site; in exchange for receiving a sewer easement for the Wincoram Commons sanitary force main, Conifer Realty also constructed a parallel dry force main from the site to the SCSO #11 sewer connection point for future use on this site. This allowed for an easy sewer connection for the All American Assisted Living project. Hayduk Engineering provided civil engineering, site planning, sanitary

engineering, and construction administration services for the All American Assisted Living Facility. The 3.65-acre site features amenities including a bocce ball court and a putting green. The project included a new sanitary pumping station connecting the facility to the existing dry force main installed as part of the Wincoram Commons project. The project also required the installation of a new traffic signal at NYS Route 25 Middle Country Road at the entrance to the All American facility. The project is currently in the construction phase and is planned to open in the fall of this year. ■

Hayduk Engineering was the recipient of the 2017 Long Island Builders Institute Gold Award in Engineering Design for the Wincoram Commons Pump Station and Suffolk County Sewer District 11, Pumping Station #3 Replacement Projects.





Hampton Inn Islandia

► This existing Hampton Inn hotel in Islandia, NY was experiencing frequent sewage overflows and pumping and hauling of sewage from what they believed to be their septic system. Hayduk Engineering was contacted by Chatham Lodging Trust, the owner and operator of this hotel and over seventy (70) other hotels nationwide, to investigate the problem and provide a resolution. After further investigation, it was discovered that the site was serviced by a passive denitrification system (a/k/a “Denite System”) that was damaged and no longer functioning, which was causing the sewage overflows and frequent (and costly) pumping and hauling services.

Passive Denitrification systems were designed and permitted in Suffolk County in the 1980’s as a bridge between conventional septic systems and wastewater treatment plants. Passive Denitrification systems allowed

for a property to be developed over the allowable sanitary density for the site, up to a hydraulic design flow of 15,000 gallons per day (gpd). Many of these systems were installed in Suffolk County. The systems were comprised of conventional septic tanks; a nitrification field comprised of galleries of upper and lower perforated pipes in a lined sand media bed; a denitrification chamber filled with sulfur and limestone; and a disposal (leaching) field. After several years of widespread applications throughout the County, it became apparent that these systems were not functioning as intended nor designed. Modifications were made to many of these systems in the following years to include wastewater dosing pumps and aeration equipment, but ultimately this technology was banned in Suffolk County due to numerous failures.

Although there were less costly alternatives available

Continued on page 4



to them, the Owner elected to voluntarily and proactively provide the most environmentally conscious approach... to demolish the existing Denite System and construct an advanced wastewater treatment plant. Hayduk Engineering prepared an engineering design report as well as final plans and specifications for a 15,000 gpd packaged Biologically Engineered Single Sludge Treatment (BESST) wastewater treatment plant. Shortly after obtaining conceptual approval of the engineering design report from SCDHS, the client expressed their interest in having Hayduk Engineering be responsible not only for the design of the system, but also the construction of the project. As a result, Hayduk Engineering partnered with Bensin Contracting, Inc. to complete the project as a Design - Build team. Hayduk Engineering completed final design and provided construction administration services for this project and Bensin Contracting Inc. and a team of subcontractors provided construction services. The wastewater treatment plant at the Islandia Hampton Inn has been in operation since March 2020. ■

Rockland Shared Use Path

► This New York State Thruway Authority (NYSTA) project included the construction of a new Shared Use Path (SUP) connecting the new Governor Mario M. Cuomo Bridge (location of the former Tappan Zee Bridge) and the existing Esposito Trail, between NY Route 9W North and the Exit 10 ramp along the NYS Thruway (I-287) in the Village of South Nyack, NY.

The 3.6 mile long SUP is part of the \$3.9 billion project to build the new Governor Mario M. Cuomo Bridge, a cable stayed bridge which replaced the Tappan Zee Bridge in 2017. Approximately 50 million vehicles cross the bridge annually.

Continued on page 5




Rockland Landing
(0.2 MILES)




Buses
(0.4 MILES)



Downtown Nyack
(0.9 MILES)

Bike Route 9
(0.5 MILES)



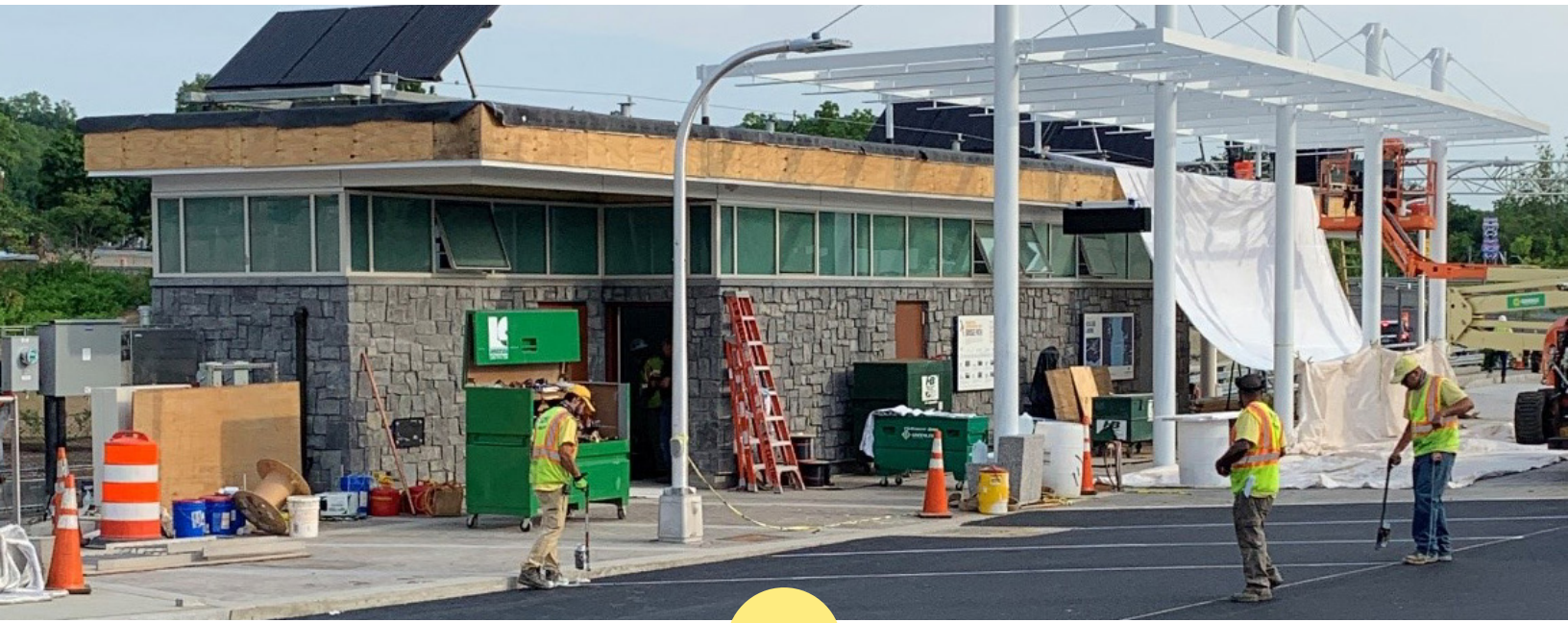
The Shared Use Path is a 12 foot wide asphalt path with a blue overlay coating that is shared between pedestrians and bicyclists. Along the path there are six (6) scenic overlook locations and at the terminus of the path on the Rockland County side of the bridge, there is a new parking lot

and comfort station.

The project included an underpass below the South Broadway Bridge; a side path behind the South Nyack Village Hall to connect the SUP with the Esposito Trail; retaining walls and noise abatement walls including secant piles walls; reconfiguration of

entrance & exit ramps; intersection improvements including traffic signals and street lighting; landscaping and aesthetic features; new vehicular and pedestrian signage including a new overhead sign structure; storm drainage and utility work.

Continued on page 6





Rockland Shared Use Path continued



Hayduk Engineering provided full time construction inspection services on this project for the duration of construction as a subconsultant to NV5. The Shared Use Path was opened to the public on June 15, 2020. ■



▶ **NEW HIRES**



Jeffrey P. Hayduk
NICET Level IV Certified Chief
Construction Inspector

▶ **RECENT CONTRACT AWARDS**

PRIME

Beechwood Organization

Confidential Project, Civil Engineering, Site Planning, Sanitary Engineering

PRIME

Hawthorne Court Apartments

Wastewater Treatment Plant Engineer of Record Services

PRIME

VA Medical Center at Northport

Wastewater Treatment Plant chemical feed system engineering design

SUB

NYS Thruway Authority

Biennial Bridge Inspection of Gov. Mario Cuomo Bridge, Engineering and Inspection Services

SUB

Metro North Railroad

Grand Central Terminal Sector 1 Train Shed Repairs, Civil Engineering, Utility Relocations, and CADD Services