

## Fall 2025 Newsletter

- Hayduk Engineering Takes on the CBIZ Workplace Challenge!
- Fun in the Sun – 2025 Company Picnic
- Battery Park City Authority – North/West Resiliency Project



## ***FUN IN THE SUN***

### 2025 Company Picnic

► On Friday, August 15th, the Hayduk Engineering team gathered at Heckscher State Park for our Annual Company Picnic! The event brought together employees and their families for a memorable afternoon filled with great food, laughter, and friendly competition. Attendees enjoyed a delicious BBQ spread, participated in a variety of outdoor games, and had the chance to win exciting raffle prizes. The cornhole tournament was a crowd



New York State Certified  
Service-Disabled Veteran-Owned Business

Continued on page 2



favorite, with Team M&M taking home the championship title for the second year in a row, congratulations on the repeat win! Events like this are a great way to strengthen our team spirit and enjoy time together outside the office. Thank you to everyone who helped organize and attended the event! ■

## Hayduk Engineering Takes on the CBIZ Workplace Challenge!

► We're proud to share that our team recently participated in the CBIZ Workplace Challenge—a dynamic initiative designed to promote health, camaraderie, and a little friendly competition among local organizations. Our involvement helped support several outstanding organizations making a difference across Long Island such as the Children's Medical Fund of NY, and The Harry Chapin Food Bank. We're honored to contribute to these causes while fostering wellness and unity within our own team. Thank you to everyone who participated, cheered us on, and helped make this event a success! ■



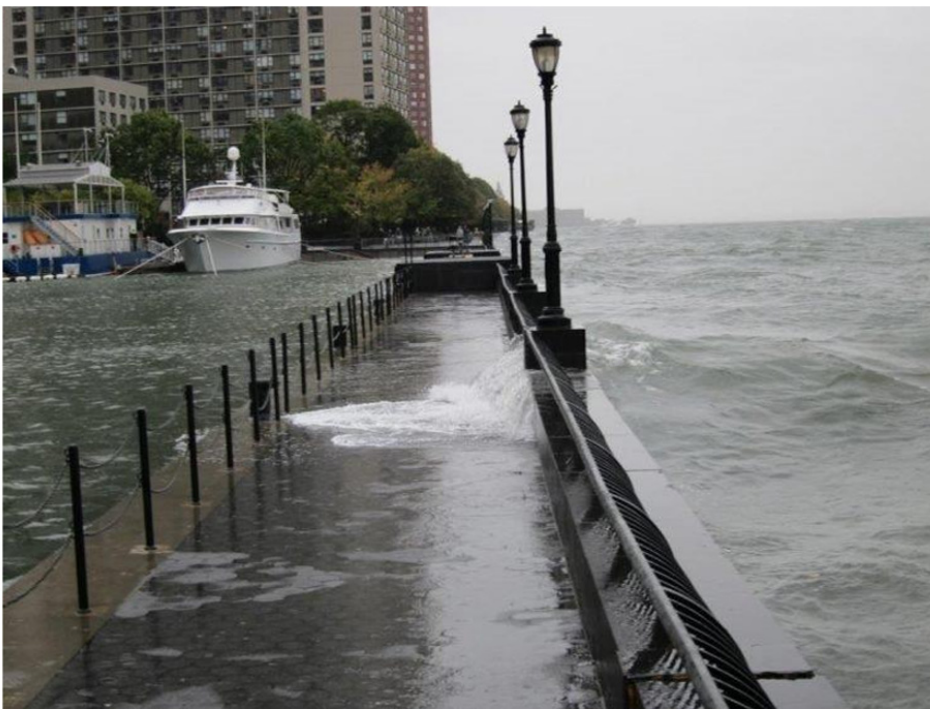


# Battery Park City Authority – ***North/West Resiliency Project***

► Thirteen (13) years post-Superstorm Sandy, the planning, design, and construction of coastal resiliency projects around New York City and Long Island still continue to progress to protect our area against the negative impacts associated with storm surge, sea level rise, and global climate change. In New York City, Superstorm Sandy resulted in 44 fatalities and cost billions in property damage. By the 2050's, it is projected that 37% of the buildings in Lower Manhattan and their supporting infrastructure will be at risk from storm surge.

In the aftermath of Superstorm Sandy and in response to the looming threat of sea level rise, the southern portion of Manhattan has taken on a large-scale storm resiliency initiative, known as the Lower Manhattan Coastal Resiliency (LMCR) project. The LMCR project includes the East Side, BK Bridge-Montgomery, The FIDI and Seaport, The Battery, South Battery Park City, and most recently, the North/West Battery Park City Coastal Resiliency project. Once completed, the combined projects have the goal of protecting the residents of lower Manhattan from negative

impacts related to future severe storm activity, storm surge, and sea level rise associated with global climate change. The projects include the construction of new flood barriers, interior drainage improvements with standalone, independent utilities for each project, enhancement of public space and increase of native planting landscaping, and reconstruction of existing bulkheads.



*Data Source: Lower Manhattan Climate Resilience Study (2019)*

*Continued on page 4*

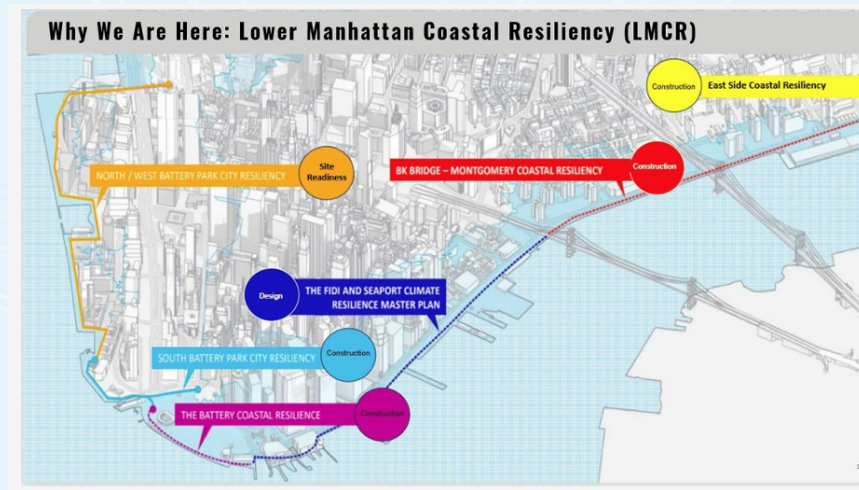


Figure 1 - Data Source Battery Park City Resiliency 11/3/2025 Presentation

Hayduk Engineering is working as a subconsultant to Arcadis on the design-build team with Turner and EE Cruz, responsible for providing site/civil, traffic, and wastewater engineering services for various aspects of the North/West Battery Park City Resiliency project. The project includes approximately 7,000 linear feet of new flood barrier wall, relocation of utilities, new landscaping and public enhancements, a new 60 million gallons per day (mgd) capacity stormwater pumping station as well as other interior drainage improvements.

Site/civil services provided under this project involve the design of new stormwater infrastructure to reduce stormwater retained by the new flood barriers. New infrastructure includes the conveyance system located under NY-9A, a new 1 mgd stormwater pumping station at the Gateway Plaza and a new 60 mgd stormwater pumping station located adjacent to Stuyvesant High School. The design of the 60 mgd pumping station includes a sewage regulator chamber which will divert storm and sewage flow from the combined sewer system to a new screening chamber, pumping station, and force main which will discharge to an existing stormwater outfall.

Traffic engineering services commenced with the development of Maintenance and Protection of Traffic (MPT) plans to support utility location and soil boring activities within the Right-of-Way. Following this initial task, MPT plans were prepared to facilitate the construction of the flood barrier system. Ongoing coordination with the Design-Builder, City and State Departments of Transportation, and Battery Park City Authority ensures that construction activities remain feasible while maintaining travel lanes and safely accommodating both bicyclists and pedestrians.

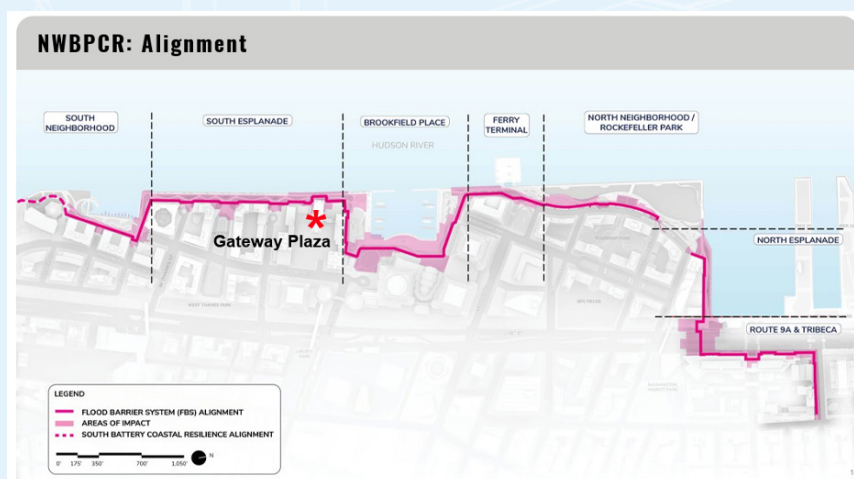


Figure 2 - Data Source Battery Park City Resiliency Update: Gateway Plaza 5/29/2025

Continued on page 5



Other support tasks provided for the project include structural support for new landscape architectural features; preparation of emergency response routing plans during each phase of a future storm; preparation of NYCDOT revocable consent plans for the proposed work; potable water distribution and utility relocations; design of a new 72" valve that conveys fresh water associated with the bridging structure that conveys the load from the new flood wall around the Port Authority Trans-Hudson tunnels that run through the project area, and mechanical and electrical reconfiguration of the Lily Pond pumping station to accommodate a flood barrier gate.

Construction on the North/West Resiliency project at Battery Park City started this Fall and is anticipated to be completed in Fall 2030. ■



Figure 3 - Data Source Battery Park City Resiliency Update: Gateway Plaza 5/29/2025

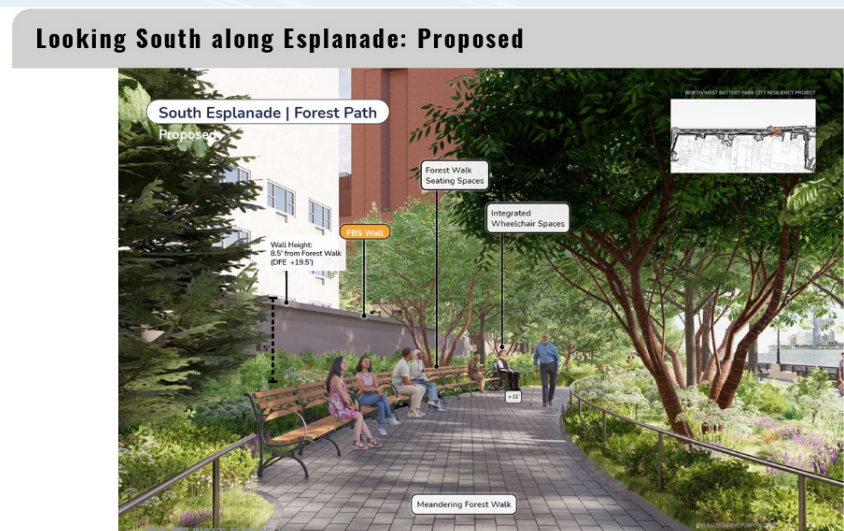


Figure 4 - Data Source Battery Park City Resiliency Update: Gateway Plaza 5/29/2025



Figure 5 - Data Source Battery Park City Resiliency Update: Gateway Plaza 5/29/2025



## ► Recent Contract Designations

### Prime

**Cornell University/LISP – Head of the Harbor Stormwater Resiliency**  
civil/site engineering

**Suffolk County DPW Medford Corridor Sewer Project**  
wastewater engineering

**Suffolk County DPW Gordon Heights Sewer Project**  
wastewater engineering

**9 Acre Holbrook Industrial Development**  
civil/site engineering

**Fox Meadow Wastewater Treatment Plant Improvements**  
wastewater engineering

**Shirley IHG Hotel Development**  
civil/site engineering

**Lawrence High School Flood Resiliency**  
civil/site engineering

**Bartone - Confidential Multi-Family Project**  
civil/site engineering

**Town of Smithtown Woodlawn Avenue Drainage Study**  
civil/site engineering

### Sub

**CUCF South Campus BESS Upgrades**  
civil/site engineering

**NYSTA Highway Design Term Agreement**  
transportation engineering

**NYSDOT Route 308 Resurfacing Dutchess County**  
construction inspection services

**PANYNJ QAD SIE Waterfront for Holland Tunnel**  
structural inspection services

**NYSDOT ITS Infrastructure Region 11**  
construction inspection services

**MTA TO#89 ADA Improvements Packages 12 & 13**  
civil/site engineering

**SUNY Stony Brook Safe Streets for All**  
transportation engineering

**NYSTA Construction Inspection NY Division**  
construction inspection services

## ► We're Hiring!

Hayduk Engineering is seeking to fill several positions in our Civil/Site, Transportation, and Wastewater Engineering Divisions, at all levels. Please contact Stephen A. Hayduk, P.E. at [sah@haydukengineering.com](mailto:sah@haydukengineering.com) for more information.

## ► New Hires

**Sheikh Hasin**  
Construction Inspector

**Daniel Mejia**  
Construction Inspector

**Trevor Napoli**  
Staff Engineer

**Ken Barredo**  
Staff Engineer



**HaydukEngineering.com** 631-476-0600